

DataSplice®

Mobile Computing

Remote Client User Manual

Equipment Views

Revised: 6/9/2005



DataSplice, LLC
414 E. Oak Street
Fort Collins, CO 80524
Web: <http://www.datasplice.com>
Email: datasplice@datasplice.com
Phone: 800.377.1974
Fax: 970.484.0965

Copyright Information

DataSplice® is a registered trademark. ©2000-2005 DataSplice Corporation. All rights reserved. Other product and company names may be the trademarks of their respective owners.

MAXIMO® software is a registered trademark of MRO Software, Inc. DataSplice is not owned, licensed, or in any way affiliated with MRO Software, Inc. MRO Software, Inc. is not responsible for the content or accuracy of this document or for the content, performance or quality of DataSplice products or services.

Microsoft®, Visual Studio, Windows and the Windows logo are either registered trademarks or trademarks of Microsoft Corporation in the United States and/or other countries/regions.

Other names and products mentioned herein may be the trademarks of their respective owners.

Table of Contents

Introduction.....	4
Purpose.....	4
Version Information.....	4
User Interface.....	5
Toolbar Buttons	6
Show View List.....	6
Toggle Display.....	6
Back	6
Next.....	6
Previous.....	6
New Record	7
Delete Record.....	7
Commit Changes.....	7
Search.....	7
Menus.....	8
File Menu	8
Edit Menu.....	9
View Menu.....	10
Session Menu	10
Records Menu	11
Navigation.....	12
Filters	13
Filter Operators	13
Wildcards	13
Simple Filters	14
Complex Filters.....	15
Advanced Filters	16
Beginning a Session.....	17
Logging In.....	17
Obtaining an Offline Session	17
Completing a Session.....	21
Completing an Online Session.....	21
Completing an Offline Session	21
Views	24
Equipment.....	25
Fields.....	26
Measure Points.....	27
Fields.....	28
Measurement Values.....	29
Fields.....	30
Route Stops	31
Fields.....	31
Routes and Rounds	32
Fields.....	32

Introduction

Purpose

This manual details the usage and behavior of the DataSplice Remote Client. The views examined in this guide represent a typical set of condition monitoring views for a Computerized Maintenance Management System (CMMS) environment. This guide will discuss the typical behavior of these views when used under normal conditions.

It is important to remember that other implementations may require completely different views. All views can be completely customized to fulfill the specific needs of any application. Modifications made to the views by administrators are not reflected in this document.

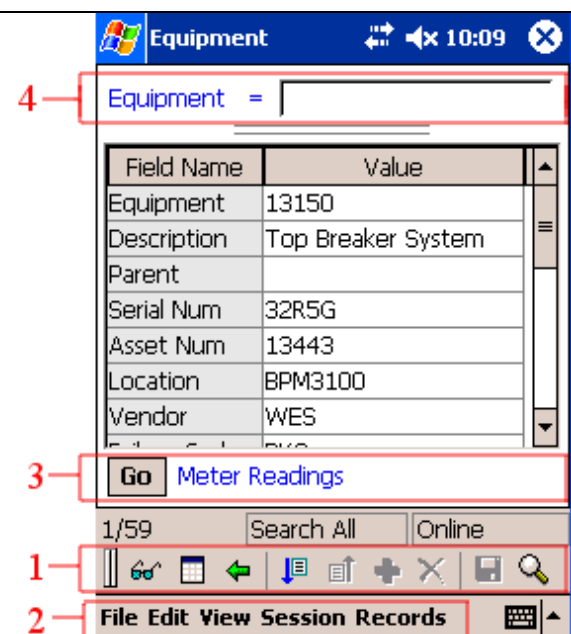
For additional documentation and support resources, please visit <http://support.datasplice.com>.

Version Information

The information in this document is valid and current with DataSplice version **2.3.10.0**.






User Interface

The first step in learning how to successfully use the DataSplice Remote Client is to familiarize yourself with the user interface of the program. The user interface can be broken down into a few important general sections:

User Interface																	
<ol style="list-style-type: none"> 1. Toolbar Buttons 2. Menus 3. Navigation 4. Filters 	 <p>The screenshot shows the 'Equipment' application window. At the top, there is a search bar labeled 'Equipment =' with a red box and the number '4' pointing to it. Below the search bar is a table with the following data:</p> <table border="1"> <thead> <tr> <th>Field Name</th> <th>Value</th> </tr> </thead> <tbody> <tr> <td>Equipment</td> <td>13150</td> </tr> <tr> <td>Description</td> <td>Top Breaker System</td> </tr> <tr> <td>Parent</td> <td></td> </tr> <tr> <td>Serial Num</td> <td>32R5G</td> </tr> <tr> <td>Asset Num</td> <td>13443</td> </tr> <tr> <td>Location</td> <td>BPM3100</td> </tr> <tr> <td>Vendor</td> <td>WES</td> </tr> </tbody> </table> <p>Below the table is a 'Go Meter Readings' button with a red box and the number '3' pointing to it. At the bottom of the window, there is a toolbar with various icons and a menu bar. The menu bar contains 'File Edit View Session Records' with a red box and the number '2' pointing to it. The toolbar contains several icons with a red box and the number '1' pointing to it.</p>	Field Name	Value	Equipment	13150	Description	Top Breaker System	Parent		Serial Num	32R5G	Asset Num	13443	Location	BPM3100	Vendor	WES
Field Name	Value																
Equipment	13150																
Description	Top Breaker System																
Parent																	
Serial Num	32R5G																
Asset Num	13443																
Location	BPM3100																
Vendor	WES																

Toolbar Buttons

The user interface of the DataSplice Remote Client has numerous components. One of these components is the toolbar, which is composed of a series of buttons. The following is a brief explanation of these toolbar buttons.

Show View List	
	This button displays the list of views available to the user. Changes made to the view display or records while in a view are not affected by navigating to the view list. For example, a user has set a view to sort in descending order and then navigates off the view. When the user returns to the view, the sort will appear as the user left it.
Toggle Display	
	This button switches the view between grid display and vertical display for the current view. Grid mode displays <i>multiple</i> records at one time. Records are displayed horizontally, one record per line. Grid mode is especially useful while searching through records. Vertical mode displays <i>one</i> record at a time. Field names are displayed in a column on the left side of the screen. The corresponding values are displayed on the right. Vertical mode is optimal for editing records.
Back	
	This button navigates the user through previous views. This is similar to using the Back button in a web browser.
Next	
	This button displays the next record(s). When in vertical display mode, tapping this button will take you to the next record in the current set. When in grid display mode, tapping this button will show you the next <i>set of records</i> .
Previous	
	This button displays the previous record(s). When in vertical display mode, tapping this button will take you to the previous record in the current set. When in grid display mode, tapping this button will show you the previous <i>set of records</i> .

New Record



This button creates a new record in the designated view. The new record may be blank, may have some fields populated with default values, or may have all values from an originating record duplicated.

Delete Record



This button removes the selected record *permanently*. **Note:** Items deleted are not sent to the Recycle Bin, and the **Delete** command cannot be reversed.

Commit Changes



This button saves all record modifications. Records are committed in the order in which they are modified. To view the list of modifications, select **Modification History** from the **View** menu.

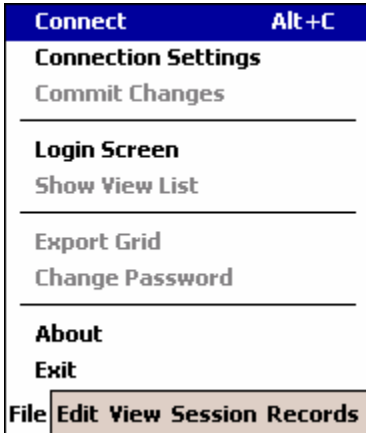
Search

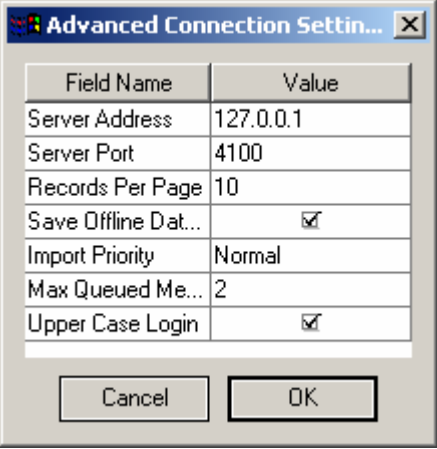


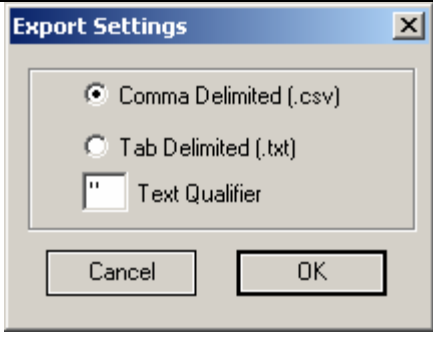
This button retrieves specified records. Filter fields define the criteria upon which the records will be searched.

Menus

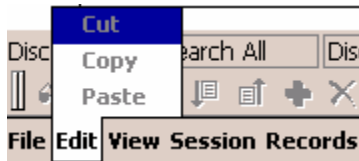
File Menu



<p>Connect</p>	<p>Tapping on this menu item connects the Remote Client to the DataSplice Server. When connected, this menu item changes to Disconnect, at which time tapping it will <i>disconnect</i> the Remote Client from the DataSplice Server.</p>
<p>Connection Settings</p>	<p>Tapping this item opens the Advanced Connection Settings dialog box:</p>  <p>This area specifies the address of the DataSplice Server, along with other properties like the number of records to view per page.</p>
<p>Commit Changes</p>	<p>Tapping this menu item saves all record modifications. Records are committed in the order in which they are modified. To view the list of modifications, select Modification History from the View menu.</p>
<p>Login Screen</p>	<p>Tapping this selection opens the Login screen. This action does not affect the connection status.</p>
<p>Show View List</p>	<p>Tapping this option opens the list of views available to the user logged in. The view list displayed is based on the class of the most recent view. To view another view class or all available views, select the appropriate option from the Select View dropdown box.</p>
<p>Export Grid</p>	<p>Tapping this item opens the Export Settings dialog box:</p>

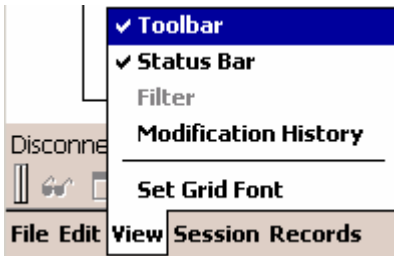
	 <p>Exporting a grid sends all visible information from the current view to an external file.</p>
<p>Change Password</p>	<p>This opens the Change Password dialog box. DataSplice users can change their passwords at any time. Additionally, some users may be required to change their password by the DataSplice Administrator. Contact the DataSplice Administrator if your password is lost or compromised.</p>
<p>About</p>	<p>This opens the About DataSplice dialog box. This box contains read-only information about the current version of the Remote Client application.</p>
<p>Exit</p>	<p>This closes the DataSplice Remote Client application. If the Save Offline Data to Disk option is selected and the user has an offline session, record modifications will be cached. The user is asked to commit data upon disconnect and reconnect.</p>

Edit Menu



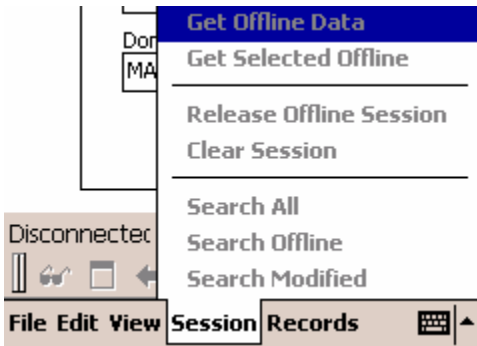
<p>Cut</p>	<p>The Cut command places the selected data into the clipboard and deletes it from its current position. Copying, cutting and pasting information reduces the likelihood of data entry errors and keeps information in the same format. Some underlying databases are case-sensitive, which means that filtering on <i>Joe Smith</i> will provide a different set of records than filtering on <i>JOE SMITH</i>.</p>
<p>Copy</p>	<p>The Copy command places the selected data into the clipboard without affecting the data itself.</p>
<p>Paste</p>	<p>The Paste command places information currently in the clipboard into the selected field.</p>

View Menu



Toolbar	When checked, the Toolbar is visible.
Status Bar	When checked, the Status Bar is visible.
Filter	When checked, the Filter fields are visible. This option will appear grayed out for users who have had this option removed by an Administrator with the <i>DS_NO_FILTER</i> attribute.
Modification History	Modification History displays all record modifications in the order in which they were completed.
Set Grid Font	Changes the type size of the characters within the data grid. You may choose from any fonts installed on your Windows platform.

Session Menu



Get Offline Data	Retrieve records marked as Offline . A green circle indicates the records that are available offline. This circle is viewable in both online and offline mode. View definitions determine which records are marked as Offline by default. The user can select which offline views they wish to download by checking the box next to the view in the Offline Views dialog. This allows static views, views that don't change, to be skipped, which reduces the time it takes to download offline data.
Get Selected Offline	Add records that are not marked as Offline records to the set of records available offline.
Release Offline Session	This return offline license to the license pool. After an offline session is released, the session becomes online-only until new offline records are retrieved.
Clear Session	This clears the current session.
Search All	The Search All option queries all the records that have been committed to the database. This option is only available while online. Uncommitted modifications will not be reflected in the query. Therefore, to avoid inaccurate searches, it is a good idea to commit all changes before searching.
Search Offline	The Search Offline option queries local records that have been marked as <i>Offline</i> records.
Search Modified	The Search Modified option queries only local records which have uncommitted modifications.

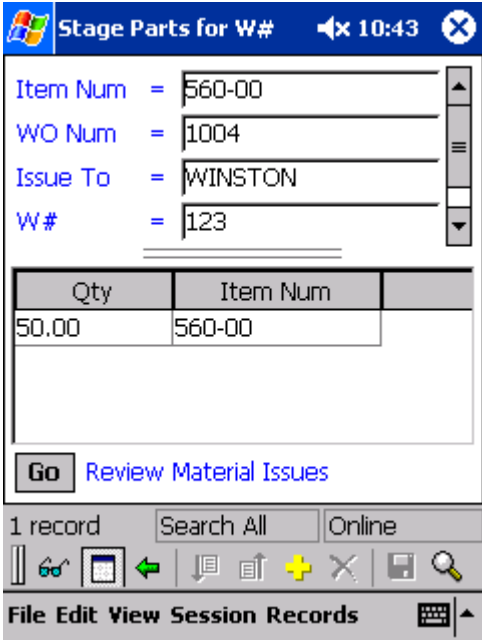
Records Menu



Narrow Search	Adds the currently highlighted field to the filter.
Clear Screen	The Clear Screen command resets the filter to the default criteria and clears any displayed records.
Reset Record Changes	The Reset Changes command reverts the record to the last committed version.
Apply Record Changes	The Apply Record Changes command commits changes to the selected record only.
Delete Record	The Delete Record command deletes an entire record from the database.
New Record	The New Record command creates a new blank record. Fields with default values will be auto-populated.
Edit Complex Filter	Opens the filter in grid mode. Conditions inserted in the same column are run with the <i>AND</i> operator. Different columns are concatenated together in the filter using an <i>OR</i> condition.

Navigation

On certain views, it may be possible to navigate to other views which have a special relationship to the one you are currently looking at. In such instances, you can use the navigation links towards the bottom of the window to move to that other related view.

Navigation	
	<p>To navigate to the associated view for the current record:</p> <ol style="list-style-type: none"> 1. Tap the navigation menu. It is displayed in blue next to the Go button. 2. From the navigation links, select the work process of interest, such as Review Material Issues. 3. Tap the Go button. This will navigate you to the selected screen, such as Review Staged Parts, and automatically filter the record selection based on the record you are navigating from.

Filters

As you are looking at views in the DataSplice Remote Client, you may want to search for particular items in the view that meet specific criteria. The filter field determines the criteria used to retrieve records from the database. The records returned from the query will have the same value in the specified field.

Filter Operators

Filter operators allow you to choose how you would like to compare the field in question and the value of that field you want to find.

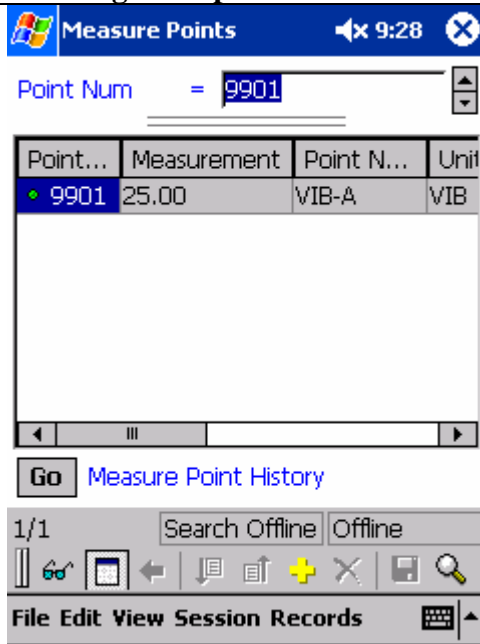
=	Equal to
<	Less than
>	Greater than
<=	Less than or equal to
>=	Greater than or equal to
<>	Not equal to
IS NULL	Returns values which are null
IS NOT NULL	Returns values which are not null

Wildcards


A wildcard is a placeholder for characters that do not have to be specified. Wildcards can be used in the filter field. For example, the records for all employees whose employee numbers begin with 27 can be retrieved by using a wildcard. In this case, the filter field would be **Employee Number**, and the value in the field would be 27%. The percent sign indicates that anything can follow the 27. In this particular case, all of the following numbers could be returned: 27, 270, and 27462983.

Simple Filters

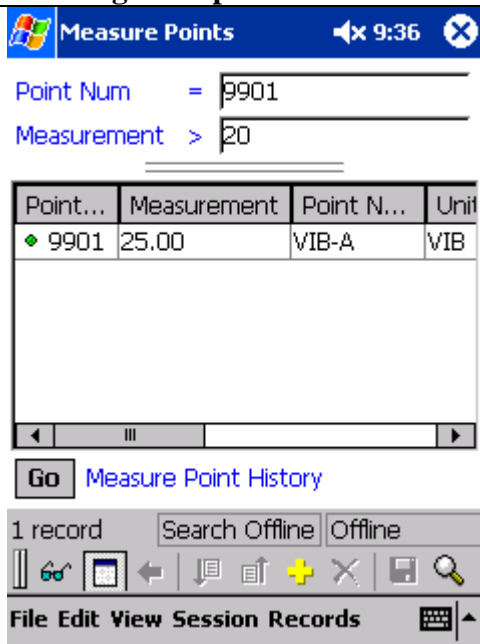
Creating a Simple Filter




To create a simple filter:

1. Tap the blue filter field. A dropdown box will appear.
2. From the dropdown list, choose the field you would like to search on, such as **Point Num**.
3. Tap on the blue “=” character to choose which operator you would like to use. For more information, please see the **Filter Operators** section above.
4. In the text field, enter the value you would like to find.
5. Tap the **Search** button  to retrieve the records.

Creating Multiple Filters



To create multiple filters:

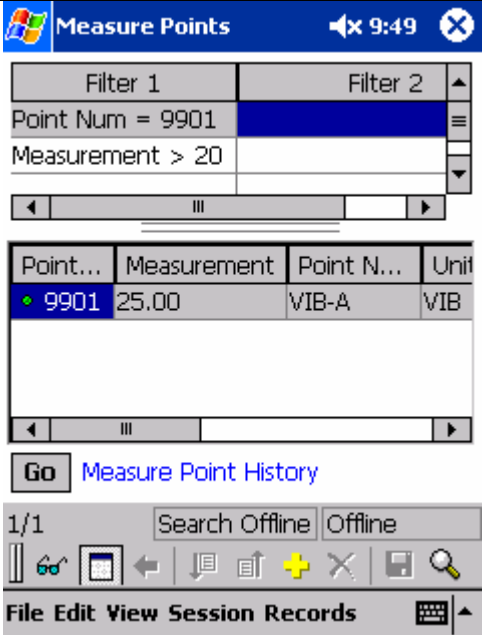
1. Tap the blue filter field. A dropdown box will appear.
2. From the dropdown list, choose **Add New Field**. Another filter field will appear below the original one.
3. Tap the new filter field. The same dropdown box will appear. From the dropdown list, select the field of interest.
4. Tap on the blue “=” character next to each filter field to choose which operator you would like to use for each of the filter fields. For more information, please see the **Filter Operators** section above.
5. In the text fields, enter values to search on for both filter fields.
6. Tap the **Search** button  to retrieve the records.

Complex Filters

Complex filters are more powerful than simple filters because they can be combined to further refine the data displayed.

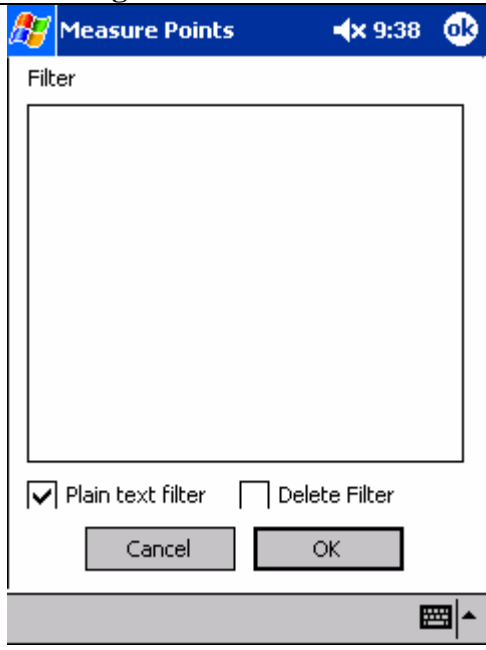
Filters in the same *column* are joined with an *AND* operation. The records retrieved must meet all of the conditions of *all of the filters* in that row.

Filters in the same *row* are joined by an *OR* operation. The records retrieved must meet all of the conditions of *at least one of the filters*.

Creating Complex Filters									
 <p>The screenshot shows the 'Measure Points' application interface. At the top, there is a status bar with the time 9:49. Below it, a filter grid is visible with two columns: 'Filter 1' and 'Filter 2'. Under 'Filter 1', the conditions are 'Point Num = 9901' and 'Measurement > 20'. Below the filter grid is a data table with the following content:</p> <table border="1"> <thead> <tr> <th>Point...</th> <th>Measurement</th> <th>Point N...</th> <th>Unit</th> </tr> </thead> <tbody> <tr> <td>9901</td> <td>25.00</td> <td>VIB-A</td> <td>VIB</td> </tr> </tbody> </table> <p>At the bottom of the screen, there is a navigation bar with icons for 'File', 'Edit', 'View', 'Session', and 'Records'.</p>	Point...	Measurement	Point N...	Unit	9901	25.00	VIB-A	VIB	<p>To create a complex filter:</p> <ol style="list-style-type: none"> 1. From the Records menu at the bottom of the screen, choose Edit Complex Filter. This will change the filter area to two columns, titled Filter 1 and Filter 2. 2. Double tap in a field to create a filter. You will be shown a screen with value fields for Display Name, Test, and Value. 3. Fill in the Display Name, Test, and Value fields as desired. The Display Name and Test fields are both dropdown lists. 4. Tap OK. 5. The new filter will now appear in the filter grid.
Point...	Measurement	Point N...	Unit						
9901	25.00	VIB-A	VIB						

Advanced Filters

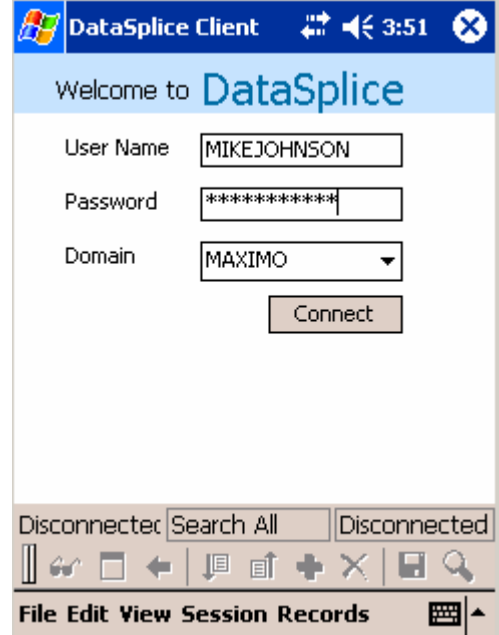
The basic filtering technique (selecting field, test, and value) works for most situations and is preferred because it ensures correct syntax in the query statements. More advanced filters may be created by checking the **Plain Text Filter** box on the **Edit Filter Item** dialog box and entering a custom SQL statement. This provides the opportunity to create unique filters based on the syntax of the particular database view by inputting text that will be inserted into the *where* clause without modification.

Creating Advanced Filters	
	<p>To create an advanced filter:</p> <ol style="list-style-type: none"> 1. From the menu at the bottom of the screen, tap Records > Edit Complex Filter. This will change the filter area to two columns, titled Filter 1 and Filter 2. 2. Double tap in a field to create a filter. You will be shown a screen with value fields for Display Name, Test, and Value. 3. Select the Plain text filter checkbox at the bottom of the screen. This will change the screen into a large text area. 4. Type your custom filter into the text area. 5. Tap OK. 6. The new filter will now appear in the filter grid.

Beginning a Session

When you start the DataSplice Remote Client application, you will first be prompted to log in and begin your session. DataSplice can function in two different modes – *online* and *offline*. The process of beginning a session is slightly different, depending on which mode you are going to use.

Logging In

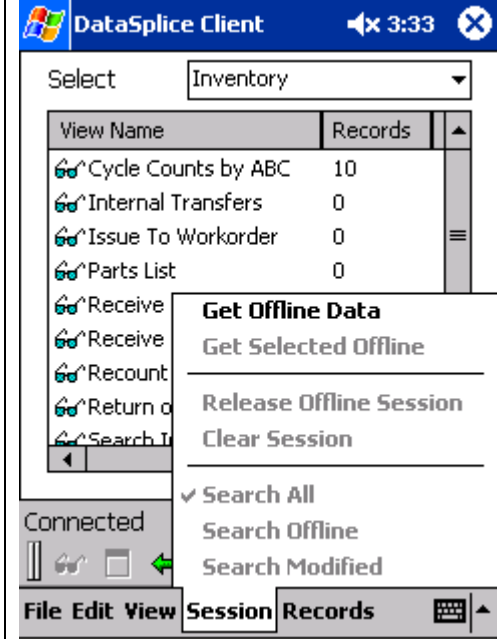
Logging In	
	<p>The first screen you will see when starting the DataSplice Remote Client is the login screen. To log in, enter your user name and password in the corresponding fields. Select your correct domain from the Domain dropdown list. If the domain you are looking for does not appear in the list, open the virtual keypad and enter it into the domain text field using the stylus. After your login information has been entered, tap the Connect button.</p> <p>Note: Please keep in mind that all user name, password, and domain information in DataSplice is case-sensitive.</p>

Once you have successfully logged in, you will be taken to the list of views. If you are going to use DataSplice in *online* mode, you can continue on to using the views. For an explanation of the views, please refer to the **Views** section later in this document. If you are going to use DataSplice in *offline* mode, you will first need to obtain an offline session. Please refer to the following **Obtaining an Offline Session** section for more information.

Obtaining an Offline Session

If you wish to use DataSplice in offline mode, you must first obtain an offline session after you have logged in. This process caches the necessary offline data directly onto the handheld device. This allows you to use the device in the same way that you would if you were in a normal online session. The difference is that DataSplice will use and update the data that is actually stored on the handheld device, since an actual connection to the DataSplice Server is not possible without connectivity.

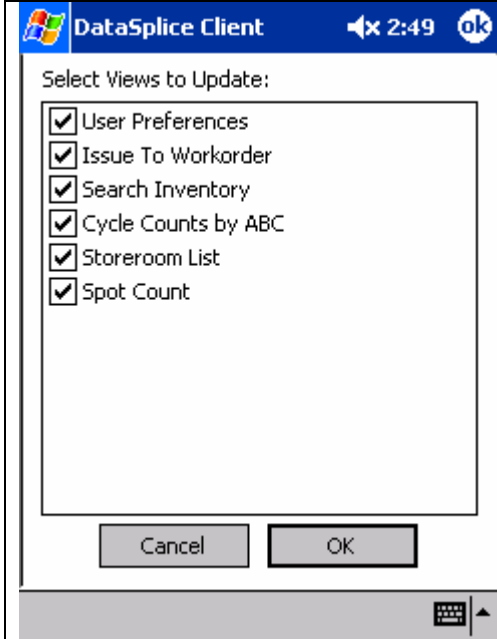
Getting Offline Data



To get offline data, tap **Session > Get Offline Data**.

This tells the DataSplice Server that you want to take your data from the Server and copy it to the handheld device so you can work offline.

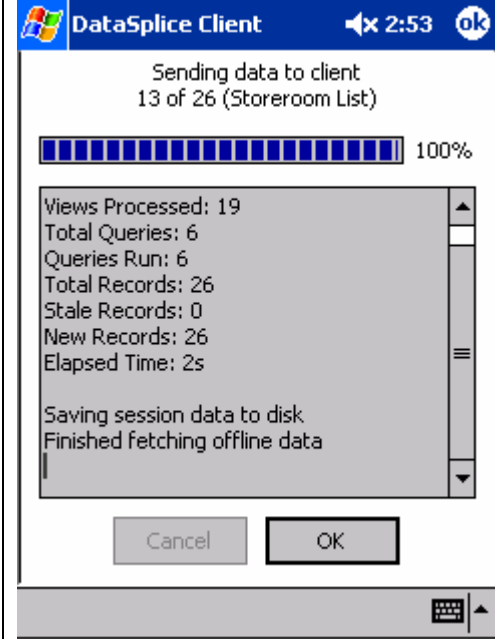
Selecting the Views to Download



You will be shown a list of views. Place a check mark beside each view for which you would like to download data to the handheld device. By default, all of the views should be checked.

Tap **OK** to continue.

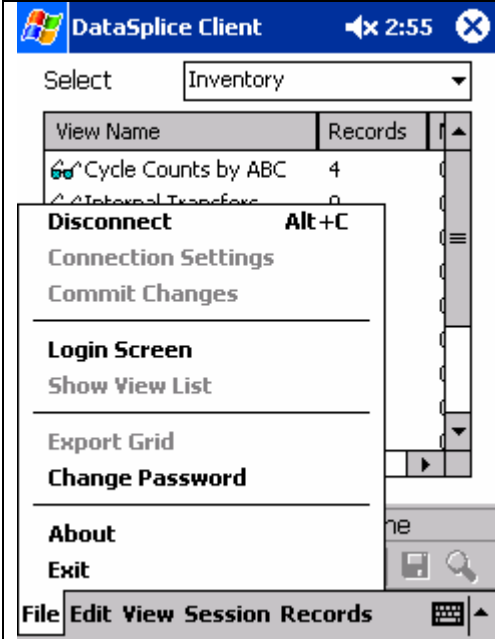
Downloading Offline Data



Based on your login name, the DataSplice Server will determine all of the necessary data to download to the handheld device.

When the download is complete, the screen will display summary information about the data received. To continue, tap **OK**.

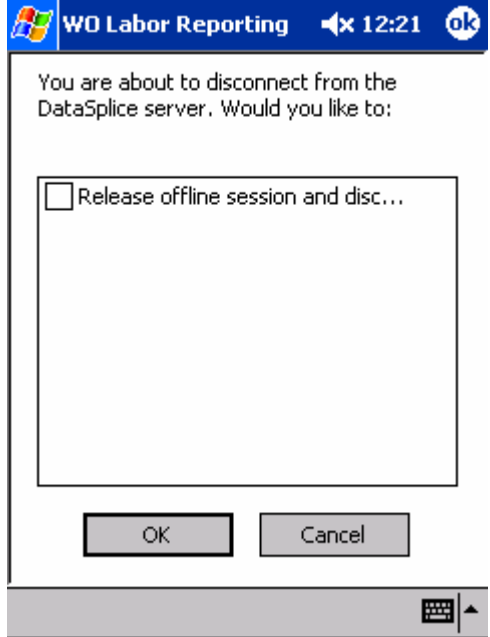
Disconnecting from the DataSplice Server



Now that the necessary data has been cached on the handheld device, you can disconnect from the DataSplice Server and go offline.

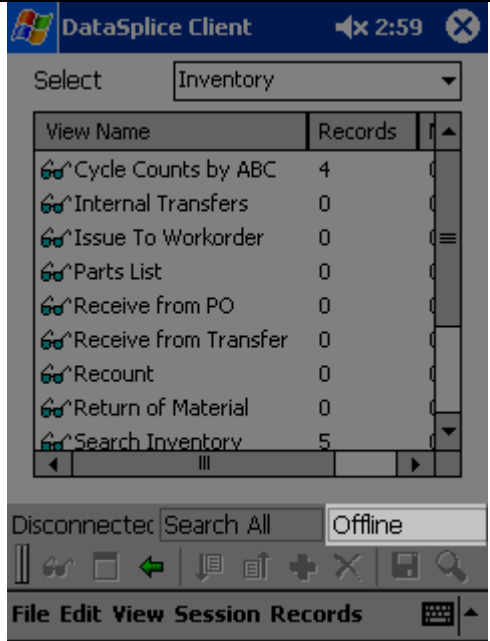
To disconnect from the DataSplice Server, tap **File > Disconnect**.

Disconnecting from the DataSplice Server (cont'd)



You will see a checkbox to **Release offline session and disconnect**. Leave this box *unchecked* and tap **OK** to continue.

Successfully Obtained an Offline Session



You have now successfully obtained an offline session and are working in offline mode. You can easily tell which mode you are in by referring to the far right section of the status bar. This should now say *Offline*.

Once you have successfully obtained an offline session, the data is cached on the handheld device, allowing you to perform the desired tasks in offline mode. Notice that the far right section of the status bar now says *Offline*. This indicates that you are now in offline mode. Another aspect to note is that offline data appears on the handheld with a green dot on the left of each record. This signifies that the record data you are viewing is actually stored on the handheld.

Completing a Session

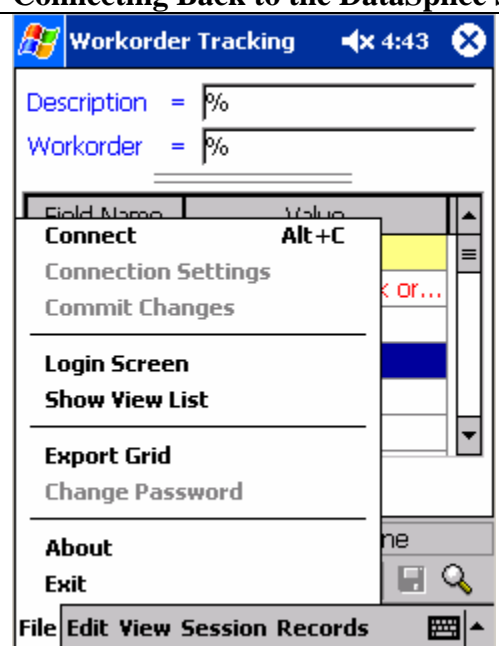
After you have performed all of the desired tasks in the DataSplice Remote Client, you will want to end your session. This process frees up the license you were using, and ensures that all of the changes you have made throughout your session have been successfully updated in the DataSplice Server. The process of completing a session differs depending on whether you are working in an *online* or an *offline* session.

Completing an Online Session

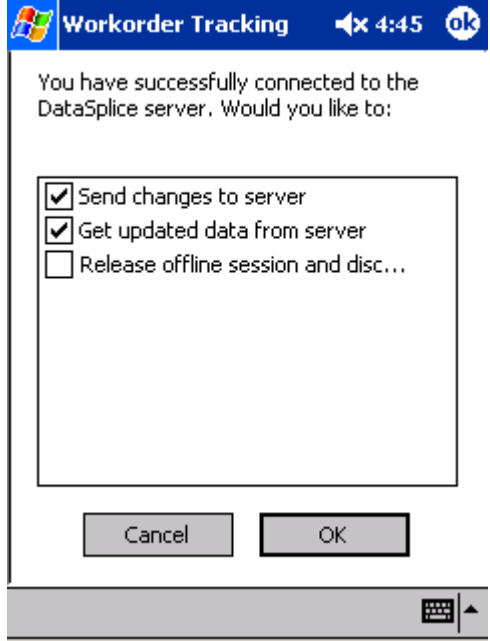
To complete a session when you are working online, the process is very simple. This is due to the fact that record modifications are synchronized with the DataSplice Server in real-time, since you are working *online*. To complete an online session, simply tap **File > Disconnect**. When you return to the login screen, your session and license have successfully been released.

Completing an Offline Session

The process of completing an offline session is slightly more involved. It is important to remember that, during an offline session, all of the modifications you have made are stored on the handheld, not on the DataSplice Server. To successfully complete the session, you need to reconnect and synchronize your modifications with the DataSplice Server.

Connecting Back to the DataSplice Server	
	<p>When you are ready to connect back up with the DataSplice Server to synchronize your changes, tap the File menu and select the Connect menu option.</p> <p>Note: The handheld device must have a TCP/IP network connection to be able to communicate with the server, i.e. through the cradle using an Ethernet cable or ActiveSync (PC) connection, or a wireless network connection, etc.</p>

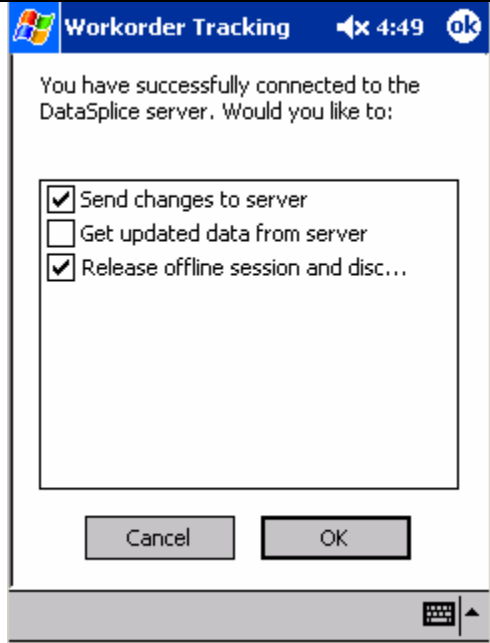
Synchronizing Data and Continuing to Work Offline



When you want to synchronize your record modifications and then continue to perform additional work offline, select the following options:

1. Check **Send changes to server**
2. Check **Get updated data from server**. The **Release offline session and disconnect** box will automatically be unchecked.
3. Tap the **OK** button

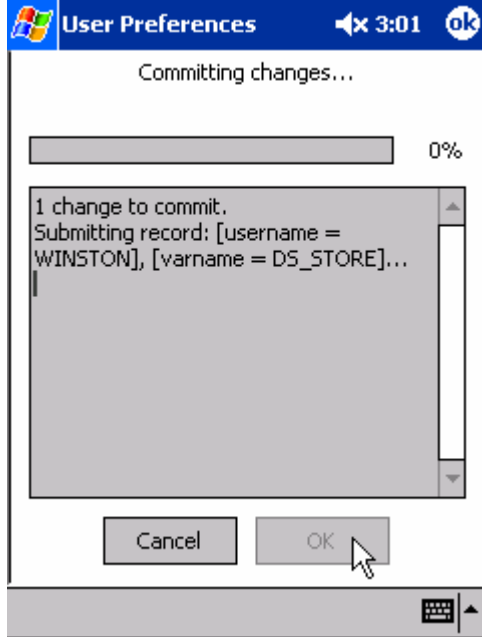
Synchronizing Data and Releasing Your Offline Session



To synchronize your data when you are finished working:

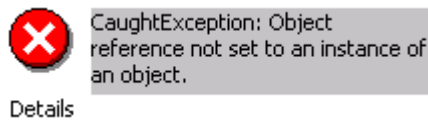
1. Check **Send changes to server**
2. Check **Release offline session and disconnect**. The **Get updated data from server** box will automatically be unchecked.
3. Tap the **OK** button.

Uploading and Committing Changes




After tapping the **OK** button from the previous screen, DataSplice begins the process of synchronizing your modifications on the handheld device with the DataSplice Server. If you selected **Get updated data from server**, then after the synchronization is complete, you will be returned to the view to continue working. If you selected **Release offline session and disconnect**, you will be taken to the login screen.

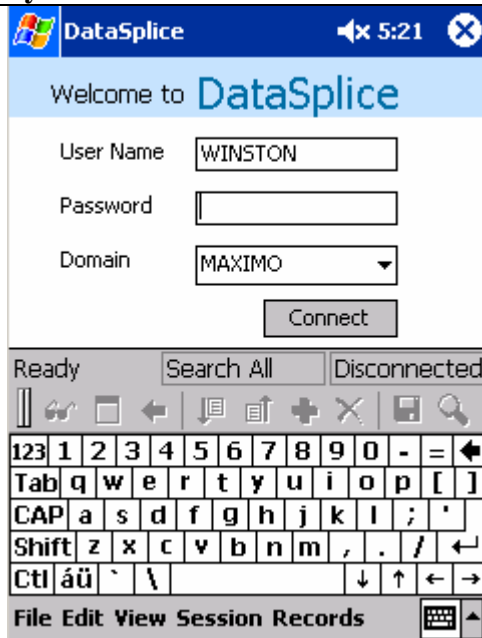
Note: If there is a problem with one of the record changes you are trying to upload, you will receive an error:



Tap **OK** to close the error dialog box. You will be taken directly to the record that caused the error, where you can fix the problem. Once you have corrected the problem, tap the **Commit**

Changes button  and you will be taken back to the screen where your data is being uploaded to the server.

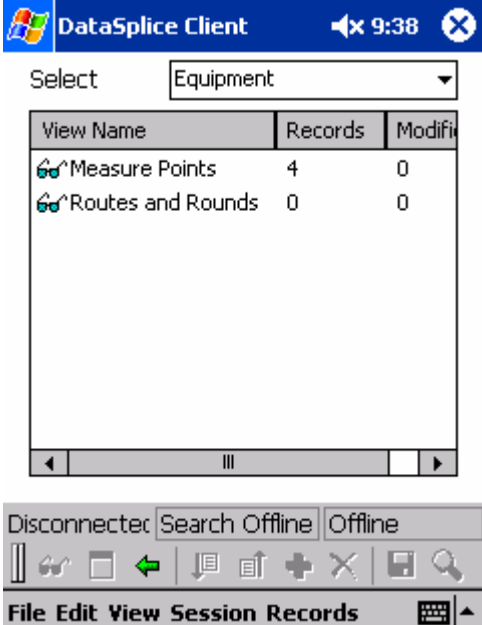

Synchronization Finished




If you selected **Release offline session and disconnect**, then after the synchronization is complete, the Remote Client will release its offline session and license, and return to the login screen. The handheld device is now ready to be used by a different user.

Views

After you have successfully logged in and begun your session, you will be presented with the view list.

View List										
 <table border="1" style="margin-top: 10px;"> <thead> <tr> <th>View Name</th> <th>Records</th> <th>Modifi</th> </tr> </thead> <tbody> <tr> <td>Measure Points</td> <td>4</td> <td>0</td> </tr> <tr> <td>Routes and Rounds</td> <td>0</td> <td>0</td> </tr> </tbody> </table>	View Name	Records	Modifi	Measure Points	4	0	Routes and Rounds	0	0	<p>The initial view list will only include a few views. To access a particular view, tap on the view name with your stylus. To return to the view list screen, tap the Show View List button .</p> <p>To perform some functions, you may need to change the view list to display all available views. See the next table titled All Available Views for more information.</p>
View Name	Records	Modifi								
Measure Points	4	0								
Routes and Rounds	0	0								

All Available Views																															
 <table border="1" style="margin-top: 10px;"> <thead> <tr> <th>View Name</th> <th>Records</th> <th>Mc</th> </tr> </thead> <tbody> <tr><td>Equipment</td><td>0</td><td>0</td></tr> <tr><td>Equipment Meters</td><td>0</td><td>0</td></tr> <tr><td>Equipment Specs</td><td>0</td><td>0</td></tr> <tr><td>Inventory Transfer</td><td>0</td><td>0</td></tr> <tr><td>Issue of Material</td><td>3</td><td>1</td></tr> <tr><td>Measure Points</td><td>0</td><td>0</td></tr> <tr><td>Physical Count</td><td>0</td><td>0</td></tr> <tr><td>Receive From PO</td><td>0</td><td>0</td></tr> <tr><td>Return of Material</td><td>0</td><td>0</td></tr> </tbody> </table>	View Name	Records	Mc	Equipment	0	0	Equipment Meters	0	0	Equipment Specs	0	0	Inventory Transfer	0	0	Issue of Material	3	1	Measure Points	0	0	Physical Count	0	0	Receive From PO	0	0	Return of Material	0	0	<p>While this manual concentrates on only those views that are directly related to equipment, you may, at any time, see a list of all available views. To do this, simply tap the Select drop-down list and select All Available Views from the list. The DataSplice Remote Client will then show you a listing of all of the available views that you may choose from.</p> <p>For more information on the other available views not discussed in this manual, please refer to the other user manuals for those modules.</p>
View Name	Records	Mc																													
Equipment	0	0																													
Equipment Meters	0	0																													
Equipment Specs	0	0																													
Inventory Transfer	0	0																													
Issue of Material	3	1																													
Measure Points	0	0																													
Physical Count	0	0																													
Receive From PO	0	0																													
Return of Material	0	0																													

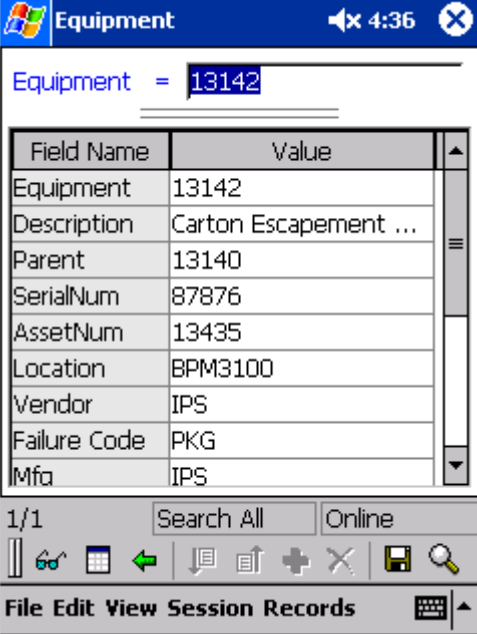
Equipment

To get to the **Equipment** view, select the **Equipment Information** link from the navigation menu on the **Route Stops** screen, and then tap **Go**:

 [Equipment Information](#)

This view provides you with further details regarding a particular piece of equipment.


Equipment



Field Name	Value
Equipment	13142
Description	Carton Escapement ...
Parent	13140
SerialNum	87876
AssetNum	13435
Location	BPM3100
Vendor	IPS
Failure Code	PKG
Mfa	IPS

When you arrive at this view from the **Route Stops** screen, it will automatically show detailed information for the piece of equipment you were looking at on that view.

To view details of another piece of equipment:

1. Enter the equipment number that you would like to view in the **Equipment** filter field. If you would prefer to find details for a piece of equipment by searching on a different field, tap the blue **Equipment** filter field and select another field to search on. Then enter the value for that field that you would like to find.
2. Tap the **Search** button  to display the results of the search.



Fields

The **Equipment** view has multiple fields. The following is a brief description of each:



Field Name	Value
Equipment	The equipment number
Description	A description of the piece of equipment
Parent	The equipment number of the parent piece of equipment
Serial Num	The serial number of the piece of equipment
Asset Num	The asset number of the piece of equipment
Location	The location of the piece of equipment
Failure Code	The failure code (class) of the piece of equipment
Mfg	The manufacturer of the piece of equipment
Installed Date	The date and time the piece of equipment was installed
Warranty Exp	The date and time that the warranty expires on this piece of equipment
GL Account	The general ledger account involved with this piece of equipment
EQ Class	The equipment class
Class ID	The identifier for that class of equipment
SiteID	The identifier for the site

Measure Points


To get to the **Measure Points** screen, tap its name from the main view list. This view provides information regarding the type of measurement being taken, such as a *Pump Rebuild Pressure Analysis*.

Measure Points	
Point Num =	<input type="text"/>
Measurement <	<input type="text"/>
	<input type="text"/>
Field Name	Value
◆ Point Num	1001
Measurement	12500.00
Point Name	PRESS-A
Unit of Mea...	PSI
Point Desc	PUMP REBUILD PRES...
Measure Date	07/13/04 11:49:20
Go	Measure Point History
1/4	Search Offline Offline
	
File Edit View Session Records 	

To create a new measure point:

1. Tap the **New Record** button . The **Point Num** field will be automatically generated and highlighted in yellow. You do not need to alter this field. In addition, the **Measure Date** field will default to the current system date and time.
2. Enter a **Point Name**, **Point Desc**, and the other fields of interest.
3. When you are done, tap the **Commit Changes** button  to save the new record. The text will change from red to black, notifying you that the changes have been saved.

To view the actual measurements that have been taken of an existing measure point:

1. In the **Point Num** filter field, enter the point number you would like to search on.
2. Tap the **Search** button  to retrieve the record.
3. With the point record displaying, you can now view the measurements that have been taken by tapping the **Measure Point History** navigation link at the bottom of the screen, and then tapping **Go**. For further information, please view the **Measurement Values** page.

Fields

The **Measure Points** view has multiple fields. The following is a brief description of each:

Field Name	Value
Point Num	The identification number of the point
Measurement	The actual measurement taken
Unit of Measure	The unit of measure
Point Desc	A description of the point
Measure Date	The date and time of the measurement
Low Action	The low level action limit
High Action	The high level action limit

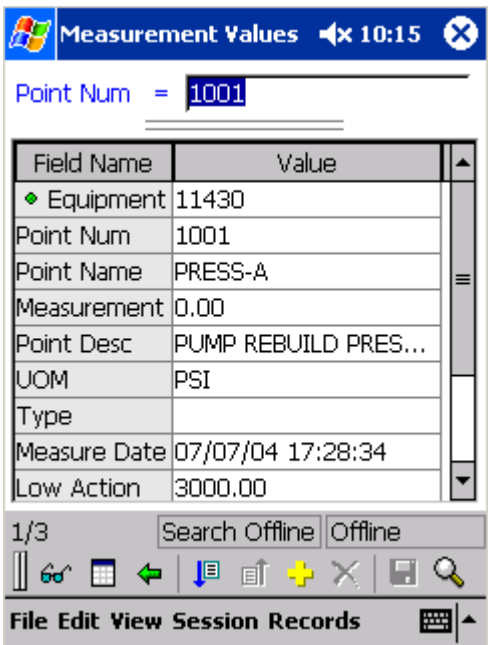



Measurement Values

To get to the **Measurement Values** screen, tap either the **View Measurement History** or the **Measure Point History** navigation links at the bottom of the screen, and then tap **Go**:

Go [View Measurement History](#)

Go [Measure Point History](#)

The **Measurement Values** view is used to enter condition monitoring measurement point values for equipment. Generally, this view is accessed from the **Route Stops** view that supplies default filtering for equipment selection.

Measurement Values		
		<p>To enter a new measurement value:</p> <ol style="list-style-type: none"> 1. Select the filter field you would like to search on, such as Equipment. 2. Tap the Search button  to retrieve the measurement records from the database. 3. Tap the New Record button . The Measure Date field will default to the current system date and time. 4. Enter the name of the measure point being taken in the Point Name field. 5. Enter the new measurement value in the Measurement field. 6. Enter the other fields accordingly. 7. When you are done, tap the Commit Changes button  to save the new record. The text will change from red to black, notifying you that the changes have been saved.

Fields

The **Measurement Values** view has multiple fields. The following is a brief description of each:

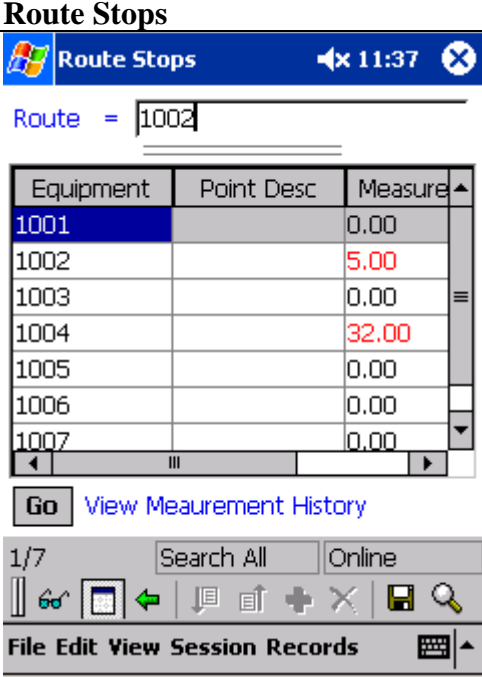
Field Name	Value
Equipment	The identification number of the equipment
Point Num	The point number identifier
Point Name	The name of the measurement point being taken
Measurement	The actual measurement taken
Point Desc	A description of the measurement point
Measure Date	The date and time the measurement was taken
Low Action	The low level action limit
Low Warn	The low level warning limit
High Action	The high level action limit
High Warn	The high level warning limit

Route Stops


To get to the **Route Stops** screen, tap the **Route Stops and Measurements** navigation link at the bottom of the **Routes and Rounds** screen, and then tap **Go**:

Go [Route Stops and Measurements](#)

The **Route Stops** view is a read-only view that is used to display the individual stops for a specified route. If any of the stops along the route are for equipment with condition monitoring points, then the user may select that route stop and navigate to the **Measurement Values** view to enter measure point values for the associated equipment. If the **Point Name** value field is blank, then the associated equipment does not have any related condition monitoring points.



To view individual stops on a specified route:

1. Select the filter field you would like to search on, such as **Route**. Then enter the value you want to search on, such as *1002*.
2. Tap the **Search** button  to retrieve the information. You will see all of the stops for that specific route. In the example at the left, we can see that route number 1002 has seven stops. Each stop is represented by the accompanying equipment number that is measured at the stop.

After you have searched for the route stops, you can navigate to either the **Measurement Values** view or the **Equipment** view by using the navigation links at the bottom of the window.

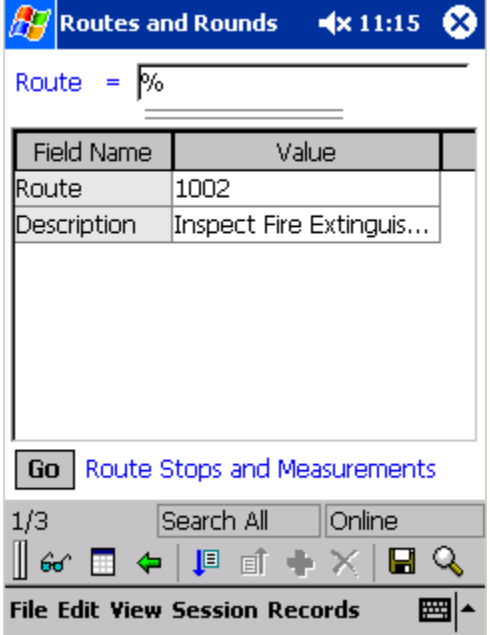
Fields

In this example, the **Route Stops** view has four fields. The following is a brief description of each:

Field Name	Value
Equipment	The identification number of the equipment
Point Desc	A description of the measurement point
Measurement	The actual measurement taken
Stop Seq	The order of this stop in the route

Routes and Rounds

To get to the **Routes and Rounds** screen, tap its name from the view list. This view shows a list all of the possible routes (rounds) in the system, such as a route to inspect fire extinguishers.

Routes and Rounds	
	<p>The Routes and Rounds view is a read-only view that is used to display the list of possible routes. To see the individual route stops for a route, select the route in the grid and use the Route Stops and Measurements navigation link. This will take you to the Route Stops view. For more information, please see the Route Stops page.</p>

Fields

In this example, the **Routes and Rounds** view has only two fields. The following is a brief description of each:

Field Name	Value
Route	The route number
Description	A description of the route